

FEBRUARY 2015

# MEADOW WOOD FARMS NEWSLETTER

www.meadowwoodfarmsocala.com



A MONTHLY PUBLICATION OF  
M.W.F.P.O.A. , P.O. BOX 77-1896—OCALA, FL 34477



## Mark Your Calendars! upcoming EVENTS

# Meet & Greet

{meet + eat + enjoy}



**Saturday, May 16, 2015**  
at The Friendship Park in  
Meadow Wood Farms  
**6 pm to 8 pm.**  
*More details to come!*

### Meetings Dates

Next Board Meeting  
**February 12, 2015**  
**Thursday—7:00 PM**

Next Assoc. Meeting  
**March 19, 2015**  
**Thursday— 7:00 PM**  
Agenda: **TBA**

**Welcome Baskets will be available at future meetings for new residents.**

### Inside this issue:

President's Message Officers	2
Association Info	3
Roads Update	4
Share the Roads	5
Clubs & Activities	6
Advertisements & Classifieds	7, 8, 9
MWF Spirit in Action	10
Form for Membership -Join Now	11

## Dancing Under the Stars

**Saturday, September 19, 2015 at The Friendship Park...**  
*More details to come!*

**PRESIDENT'S MESSAGE: How's your glass?**



I am typically a glass better than half full kind of guy. I have been most of my life. I feel that if I have been getting up on the wrong side of the bed, well then it's time to put that

side of the bed against the wall and take steps to solve the problem. I feel it is a horrible waste of my time and energy to be negative or be around negative people. That doesn't mean I'm immune to being negative, I just prefer not to be. But this past year from just before Christmas until early January, I was in a rather deep blue funk. Every day I was reminded of my funk, and no matter what folks said it just wasn't enough. I had to get myself out of the doldrums, try to find the positive and move on. My glass had to be refilled and quit leaking. I just couldn't do it.

What was the cause of the problem? Was it the constant barrage on the internet about the roads? No, that burst of negative energy wasn't the cause. Was it the Holiday blues? No, I rather like the Holidays, but I'm glad they only last from Labor Day until New Years. Was I worried about what the New Year might bring? Not really. There is only so much about it I can do anyway.

No, what caused my funk was that I knew I was going to lose a friend. A

good and loyal friend, and sooner rather than later, and I had know it for almost a year. The worst part was I knew there was nothing else we could do, no help we could conjure up, no magic potion or wizards wand would come into play. This was not going to have a happy Disney ending. No, my funk was just building slowly over the year and I was not alone. I had a couple of partners in this journey, this huge build-up of negative energy, and at times there were two of us to feed off of each other by words and deeds and that only made it worse for all of us.

What caused my funk you might ask? Well, our St. Bernard, Tiffy, had been diagnosed with bone cancer in February of 2014. She had a lump on her leg that we noticed, along with a limp and so we took her to the vet. The news was not good and the prognosis was even worse. Initially they told us she might live for 6-8 weeks. Glass leaking! We got some pain meds and after the 6-8 weeks went past we took her for another check up and found out while it was still bone cancer it was the least aggressive kind and she would be around longer, though they did not know how much longer. Glass repaired and refilled.

Deb and I decided the best thing to do was look at each day as a gift. Play with Tiffy and not worry too much about what might happen as the cancer con-

tinued to weaken the bone in her leg. With the meds they gave us she stayed happy, alert, active, and for the most part pain free. Oh, we adjusted them a couple of times and each time the vet would say; "Wow! I'm amazed you still have her." So were we, and our glasses stayed rather full, except for those few times we would sit and discuss the inevitable outcome, at which time we could drain our glasses rather quickly. But we would see a big old St. Bernard mug looking up at us and our glasses would start to fill again. And fog a little.

Then in mid-December our glasses started to really leak. They leaked almost daily. The tumor was noticeably larger, we could really see lumps on her other legs and feet, the pain meds were working less and less and she had less energy. She still ate well, was alert and played a little, but she wore out much faster and took longer to recover. But she was on duty. Someone would pull into the driveway she would let us, and them, know she was around and announce them with her big hearted "WOOF!".

Then right after New Year she started limping pretty bad. We called the vet and once again heard; "WOW! I amazed you still have her." They gave us a bump in her pain meds and another anti-inflammatory and told us what we already knew. "This is the best we can do and if it doesn't work.....".

*President's Message Continued on Page 5*

**Officers of MWFPOA & Committees**

President	Dave Kane	352-509-7754	Beautification	Chair: Vacant	
	<a href="mailto:dck945@yahoo.com">dck945@yahoo.com</a>		Control	Chair: Vacant	
Vice-President	Donna Levin	262-497-1618	Directory	Chair: Elizabeth Waller	304-8871
	<a href="mailto:wdblevin@gmail.com">wdblevin@gmail.com</a>		Membership	Chair: Dick Woodrome	861-2364
Secretary	Leslie Pope-Hall	861-3292	Newsletter	Chair: Lisamarie Lucia	690-6099
	<a href="mailto:blctie@aol.com">blctie@aol.com</a>		Parties	Chair: Connie Story &	369-0809
Treasurer	Dick Woodrome	861-2364		Sandy Mollberg	861-9622
	<a href="mailto:rdw218w@aol.com">rdw218w@aol.com</a>		Recycling	Chair: Rachael & Lillian Workman	
			Refreshments	Chair: BK Sawyer, Janice	861-8883
				Eide	
			Sunshine	Chair: Sandy Mollberg	861-9622
			Welcome	Chair: Della Brock	873-2726

MINUTES ARE POSTED ON THE WEBSITE AFTER THE BOARD MEETINGS AND THE GENERAL MEMBERSHIP MEETINGS

## Directory Information

### 2013/14 Directories are printed

They will be available at the meetings or please contact Dick Woodrome at [rdw218w@aol.com](mailto:rdw218w@aol.com) or call 861-2364 to find out how to get yours. Directories are free for members. Non members may purchase the directory for \$5.00. Members who would like to have an extra copy may purchase one for \$2.00.

**Update Info to Directory:** If you have any updates, please send them to Dick Woodrome at [rdw218w@aol.com](mailto:rdw218w@aol.com)

**UPDATE**

Ian & Karen Reade  
Phone: (352) 622-2030  
Email: [at20146@earthlink.net](mailto:at20146@earthlink.net)

### Thank You Newsletter Delivery People

A volunteer group of your neighbors delivers your newsletter every month. This saves the association considerable mailing expense and ensures that you get your newsletter in a timely manner.

## Membership & Newsletter

The newsletter is ALSO available in color on the website.  
[www.meadowwoodfarmsocala.com](http://www.meadowwoodfarmsocala.com)

The current **membership** year runs from June to the end of May the next year. Please renew your membership ASAP. Your membership supports the monthly Newsletter along with a multitude of events and improvements to our community. We need all of you to participate in keeping Meadow Wood Farms the wonderful place to live that we enjoy. Finally, don't forget that as a member you have a voice and a vote and are encouraged to participate in all aspects of the Association.

**Need to check if you've paid? Contact Dick Woodrome at 861-2364 or email him at [rdw218w@aol.com](mailto:rdw218w@aol.com).** You can have the good feeling that comes from being an involved and contributing member of your community.

**The NEWSLETTER will be delivered to everyone in MWF who requested it.** Mailing tubes have been attached to your mailbox stand in order to make these deliveries legal in the eyes of the USPS. If you're not getting one and/or need a tube, contact **Dick Woodrome** at 861-2364 or email him at [rdw218w@aol.com](mailto:rdw218w@aol.com)

**\*\*NOTICE: Residents who summer outside of Meadow Wood Farms please advise Jessica St. Hilaire at [rootedin-succulents@yahoo.com](mailto:rootedin-succulents@yahoo.com) to update your subscription from home delivery to the mailing list.\*\***

## Sunshine Report

If you are aware of someone who could benefit from receiving a card, whether due to illness or other reason, please notify:

Sandy Mollberg at: [lenelew@aol.com](mailto:lenelew@aol.com)

Phone at 861-9622.

Speedy Recovery :

Jules Hager

&

Lynn Young

Thank you also to our generous members who contribute delicious goodies to our meetings making them more festive and social.



## MWF Pet Rescue

Please call Stephanie (Stevie) Gordon at 352-566-8527 or Sandy Mollberg 352-861-9622.

## Recycle Your Aluminum Cans

To Benefit MWFPOA Treasury

Two of our neighborhood young ladies have volunteered to take over the collection.

**Thank you Rachael and Lillian Workman!**

The recycle point for your aluminum cans is at the front entrance to the Friendship Park on Lake View Drive East. Barrels are provided for that purpose. Cans that are rinsed, tab tops removed and crushed are our favorites. Tab tops may go to any charity you know or bring them to meetings to go to Shands Juvenile Kidney foundation.

**ALUMINUM CANS ONLY PLEASE!**



**Come to the Meeting  
and Win \$100.00**

### MWF Roads Status Report – Jim Bain

Needless to say, there have been a number of developments in the last few weeks on our road project. Just before the Christmas holiday, work had slowed down due to a problem with the sub-surface on Tropical Park. Approximately 75 feet of road bed was found to be unsuitable to support the road surface. While the county and the engineers worked out a solution which included digging up the unsuitable material to a depth of 3 feet, the contractor opted to delay paving both Tropical Park and Woodridge as these roads would be used for equipment and dump truck routes.

Concurrently, numerous areas were discovered that indicated that the contractor may not have complied with the specifications. Problems included new potholes in recently paved surfaces, segregation of new asphalt, raveling of new asphalt, substandard joints between adjacent asphalt sections, asphalt density, asphalt thickness, broken edges on the new asphalt roads and unacceptable driveway connections to the new asphalt.

The county project coordinator, contract engineer, Marion County MSTU director and I toured the entire project on Tuesday, January 6<sup>th</sup> to examine these issues and gauge their extent. Following that inspection, the county issued a cease work order on January 6, preventing the contractor from doing any more work until the contractor developed and submitted a written plan to correct any and all deficiencies.

An acceptable interim plan was submitted to the county on Friday, January 16. It has been approved by the county and the contractor was directed to return to work on Tuesday, January 20. They began by addressing the issue on Tropical Park as well as re-grading and re-sealing both Tropical Park and Woodridge.

The contractor has agreed to an intensive inspection and testing of the entire project identifying any and all deficiencies. He must prepare a solution plan for each and every deficiency, and submit those plans to the county for approval. They have also agreed to suspend any requests for further payments (nearly \$900,000) until all deficiencies have been corrected. That testing began on Tuesday, Jan. 20 and continues to reveal defective work. The contractor will bear the costs of any corrective or additional work necessary to make certain that we get the roads we have paid for. The county engineer has made it clear to the contractor that a "patch work" fix will not be acceptable. Additionally, the county holds a performance bond to ensure the contractor performs according to the specifications and standards of the contract.

As we move toward successful completion of this project, I would ask that you do a couple of things. First, **if you have any issues on the quality of the roads, please send them to me *in writing* via [mwfroads@aol.com](mailto:mwfroads@aol.com) or my personal e-mail.** Pictures are encouraged as well. I will make certain they are added to the list. If you prefer, you may contact the Project Coordinator, George Solana or the Director of the MSTU, Teresa Darnell. Second, I would ask that you continue to be patient. Please remember that the substantial completion date for the project is March 31, 2015. The contractor has every right, every intention, and every responsibility to correct any deficiencies. I believe that the county will hold them to that responsibility.

Respectfully submitted:

Jim Bain

[jbain2@cfl.rr.com](mailto:jbain2@cfl.rr.com)

352-237-9672





## Share The Road Safely— Dave Kane

We were driving west on Hwy 40, had the green light at 110<sup>th</sup> and just as we were about to enter the intersection, a pickup truck going south on 110<sup>th</sup> ran the light right in front of us. Luckily I saw her coming. The lady driving glanced our way and raced off west on 40. When she reached 328, the light for 40 was red and there was a line of about 5 cars on westbound 40 waiting for it. She drove into the right turn lane and then drove right through the intersection continuing west on Hwy 40. I never got close enough to get a license plate number and she would have been long gone had I waited for the light and tried to follow her.

Failing to stop at a red light is the most common of all urban crashes according to the Federal Highway Administration.

Did you know that a motorist is more likely to be injured by someone running a red light than any other type of crash? There have been about 9000 fatalities in the past 10 years as the result of running red lights. 93% of drivers view running a red light as unacceptable, yet 1 in 3 drivers said they had run a red light in the past 30 days. Also, about 165,000 motorists, cyclists and pedestrians are injured annually by red light runners. Further, over half the people killed by red light runners are not the person running the red light.

In 2013, the most recent complete year of data available, the Florida Highway Patrol issued 122 citations for running a red light, city police agencies issued 259 and Marion County Sheriff issued 36. There were 824 cases of running a red light county wide.

You can learn more at the National Highway Traffic Safety Administration website, <http://safety.fhwa.dot.gov/intersection/redlight/brochure.cfm>.

The most common reason given for running a red light; people wanting to save time. If you run a red light you might run out of time. If you are first in line and get the green light, pause before entering that intersection and look both ways. Pay attention to the traffic around you. It's saved Deb and me and could save you as well. These facts and issues most likely apply to stop signs too, don't you think?

---

### **President's Message Continued from Page 2**

Why do we have to make that choice?  
Our glasses were almost empty.

On January 7<sup>th</sup> we took Tiffany to the vet. We knew we were coming home alone that day. I believe that Tiffany knew it as well. Our glasses were empty. I don't think we could have gotten a tissue wet with what was left in them. We were spent. We had another huge hole in our hearts. It really didn't help that right after walking out of the exam room, without Tiffany, we see someone walking out of another exam room with...a St. Bernard. Mona was her name and we had met her in Dunnellon at the Music Festival as she was being walked by her people. We got in the car alone and drove home and as I looked in my rear view mirror I saw Mona sitting in the passenger seat of her Mom's car right behind us. It wasn't helping our glasses.

Slowly the holes in our glasses are being patched. We have heard from a lot of friends who have sent their condolences. A friend in Oregon sent us a book called the *Heaven of Animals*. That

was waiting on our steps when we came home from taking Tiffany to the vet.

We've gotten cards, texts, emails and calls. All of them positive and all help patch the leaking holes in our glasses. We also remember the good times and that Tiffany is no longer suffering. We also believe she is hanging out with our other dogs who have gone before her and they are all waiting with tails wagging. All of you who have lost a special pet know what we mean.

Lately our energy has made the turn to the positive. We are no longer the purveyors of negative energy. Our glasses are filling and we are taking a negative and turning it around. Our energy levels and the energy we put forth are now on the positive side. Oh, we still have holes in our heart, but they are healing. We'll probably be dog free for a while. But I do think I hear a big "WOOF" in our future. That will help with the energy level and the "Funny Shui" around this place. Our glasses are patched and refilling. Tiffany and the rest wouldn't want it any other way.

So, what does your glass look like? Is it half full or half empty and leaking? You know that while others may influence whether you are a positive person or a negative person, it is your decision and yours alone to be one or the other. Be that positive energy person and you'll be surprised at how much better you, and everyone around you, will feel. Tiffany would want you to feel that way.

As always after an Association membership meeting I highlight those recognized by the membership during the meeting for doing something good and positive within Meadow Wood Farms. This month Toni Kimball recognized Betty Zamastil and Helen Wright for being her chauffeurs after her surgery. Les Barker recognized Jim Bain for acting as Meadow Wood Farms liaison for the past 2 years on the road project. Congratulations and a tip of the hat to all three.

Stay Safe,

Dave Kane, President, MWFPOA

## Meadow Wood Equine Club (not affiliated with MWFPOA) —Carol Shockey

**MWEC - Meadow Wood Equine Club Inc.** (not affiliated with MWFPOA) is a social group of horse oriented people. Join us for discussions, find someone to ride with, camaraderie, food, etc.. Guests / Visitors are welcome. **Membership is open to anyone** – you do not have to own a horse or live in Meadow Wood Farms to join. Membership is \$5.00 a year. Members receive a 10% discount off “most in store items” at Seminole, Tack Shack and J & J Tack. - some restrictions apply – some items are not discounted, such as feed, hay, shavings, and warehouse items. Ask store for their details. You must show your membership card to receive the discount. For more information, please call: Secretary-Treasurer Kathy Rohlwing at 861-7405, or Vice-President Carol Shockey at 873-4719, or President Leroy Conro at 873-2153.

### Upcoming Horsey and Other Events

**The Annual Horses for Hospice Trail Ride** - the 14th Annual Trail Ride held in Feb 2014 was the last (final) event. A Hospice flyer states “.. we find ourselves needing to focus on the fulfillment of our mission through more streamlined and focused methods of fundraising. Several of our events are being replaced...” Hospice of Marion County Administration Building, 3231 SW 34th Ave. 352-873-7400. For a list of current events - <http://www.hospiceofmarion.com/events.html>

**February 3-8, 2015- HITS Ocala Winter Circuit Classic - IV** - at Post Time Farm, 13710 US Highway 27. 352.620.2275.

**February 4, 2015 - Winter Wednesday Jumper Show** - at the Florida Horse Park. \* For more information [www.winterwednesdays.com](http://www.winterwednesdays.com).

**February 6-7, 2015 - Ocala Truck and Tractor Pull** - at the Southeastern Livestock Pavilion - 2232 NE Jacksonville Road.

**February 7-8, 2015 - Ocala Horse Properties Winter Series 3** - 8:00 AM - at the Florida Horse Park. \*

**February 10-15, 2015- HITS Ocala Winter Festival** - at Post Time Farm, 13710 US Highway 27. 352.620.2275.

**February 11, 2015 - Winter Wednesday Jumper Show** - at the Florida Horse Park. For more information [www.winterwednesdays.com](http://www.winterwednesdays.com).

**February 11, 2015 - POP XC Schooling Day (Partners of the Park Cross Country Day)** - at the Florida Horse Park. \* For information and entry form [FHP-POP.com](http://FHP-POP.com)

**February 13-15, 2015 - Grand Oaks Classic Pleasure Driving Competition** - at The Grand Oaks Resort, 3000 Marion County Rd, Weirsdale

**February 14, 2015 - Tractor Supply Farm Swap** - 9:00 am - 2:00 pm - (RAIN OR SHINE) - Buy-Sell-Trade Anything and Everything Poultry, Livestock or Farm related (NO yard sale items). They can have some corals set up for anyone who wants to bring larger animals such as horses and cattle if you contact Joan: 352-216-4225. at Tractor

Supply - 11252 N Williams St, Dunnellon. For more info contact Joan: 352-216-4225

**February 14-15, 2015 - Florida High School Rodeo Association Rodeo** - at the Florida Horse Park. \* For more information contact Paul Albert at [plharvesting@gmail.com](mailto:plharvesting@gmail.com).

**February 14-15, 2015 - Ocala Sportsman Expo** - at the Southeastern Livestock Pavilion - 2232 NE Jacksonville Road.

**February 16 - March 4, 2015 - Southeastern Youth Fair** - at the Southeastern Livestock Pavilion - 2232 NE Jacksonville Road.

**February 17-22, 2015- HITS Ocala Masters - VI** - at Post Time Farm, 13710 US Highway 27. 352.620.2275.

**February 18, 2015 - Winter Wednesday Jumper Show** - at the Florida Horse Park, . For more information [www.winterwednesdays.com](http://www.winterwednesdays.com).

**February 19-22, 2015 - Kingdom of the Sun Combined Driving Event** - 9:00 AM- at the Florida Horse Park. \* For more information contact EllenMarie Ettenger, Event Director, at 352-307-6699, or email [events@flhorsepark.com](mailto:events@flhorsepark.com).

**February 24 - March 1, 2015- HITS Ocala Tournament - VII** - at Post Time Farm, 13710 US Highway 27. 352.620.2275.

**February 25, 2015 - Winter Wednesday Jumper Show** - at the Florida Horse Park. \* For more information [www.winterwednesdays.com](http://www.winterwednesdays.com).

**February 25, 2015 - POP XC Schooling Day (Partners of the Park Cross Country Day)** - at the Florida Horse Park. \* For information and entry form [FHP-POP.com](http://FHP-POP.com)

**March 1, 2015 - STRIDE Dressage Schooling Show I** - at the Florida Horse Park. \*

**March 1, 2015 - Fun 'n' Sun Show 'n' Go Dog Obedience and Rally** - 8:30 AM - 12:00 PM - at the Florida Horse Park. \* the Florida Horse Park, 141008 S. Hwy 475

## Line Dancing —Sandy Mollberg



Our Line Dancing "club" has been well attended. We're meeting on Mondays and Wednesdays at 7:00 PM at Friendship Park for Line Dancing. There is a step by step run through before each dance to ensure you get it. Y'all come! It's lots of fun and good exercise. Call Sandy Mollberg at 861-9622 or just show up.

**It's FREE!**

*Support Your Local Merchants. They're Supporting Us.*

Promote your business with an ad in the Meadow Wood Farms Newsletter. For more information or to place an ad, please contact Lisamarie 352-690-6099. Although the Association cannot warrant its advertisers, many are your neighbors and all will appreciate your patronage.



## TOTAL FARM MAINTENANCE, LLC

**ONE CALL DOES IT ALL**

**EARNING YOUR BUSINESS**

**THE OLE FASHION WAY**

**AFTER HOUR CALLS AND EMERGENCY CALLS ARE FINE**

★ **FULLY INSURED** ★ **FREE ESTIMATES**

★ **LIST OF REFERENCES**

### SERVICES

- ~Tree Trimming & Removal
- ~Farm Cleanup Of Any Kind
- ~Fencing New & Repair ~Bush Hogging & Seeding
- ~Home Repairs of Any Kind
- ~Concrete Work & Grading
- ~Water Lines & Drainage Problems
- ~Barn Building & Repairs
- ~Farm Management & Caretaking
- ~Arenas & Custom Jumps
- ~and more...

**John & Denise Thompson**

**CALL FOR FREE ESTIMATE**

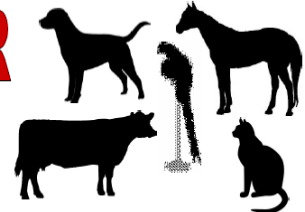
**(352) 425-3578**

## PET SITTER

**Pamela Hebert**

**Fully Insured/Bonded  
Dogs, Cats, Horses, Birds,  
Exotics. Feed, clean, get  
mail, water plants, etc.**

**I come to your house.  
Less stress for your pets!**



**1-410-708-6475**

[pam@ezsignsonline.com](mailto:pam@ezsignsonline.com)

OCALA, FL

*Years of horse & vet tech experience.*

**M.W.Farms Resident**



**Deni Buetow**  
Realtor®

Direct: (352) 497.0220  
Office: (352) 369.6969  
Fax: (352) 300.1141  
[Deni@RoyalShellSales.com](mailto:Deni@RoyalShellSales.com)

**ROYAL SHELL**  
*Real Estate*

[www.RoyalShellSales.com](http://www.RoyalShellSales.com)

4090 NW 84th Court

Ocala, FL 34482

**A Division of Golden Ocala Golf & Equestrian Club**

"Help You Sell?"

Proud Resident of MWF since 2005



**Desiree Barbazon Realty**

6998 NW Hwy 27  
Ocala, FL 34482



**Sheryl Howard**  
REALTOR®

**352-650-7580** Direct

352-401-0099 Office

352-861-1874 Fax

[sherylhowardrealtor@gmail.com](mailto:sherylhowardrealtor@gmail.com)

[www.DesireeBarbazonRealty.com](http://www.DesireeBarbazonRealty.com)



# SAM SCHUYLER DESIGNS

Savings up to  
**40% OFF  
RETAIL!**

**BUY  
FACTORY  
DIRECT!**



- Entertainment Systems • Custom Cabinets • Murphy Beds • Kitchens • Fireplaces & Prefacing
- Laundry Rooms • Home Offices • Libraries • Pantries • Garages • Closets

SamSchuylerDesigns.com  
1800 NW 10th St., Ocala, FL 34475

**352-873-4309**



*Meadow Wood  
Lawn Care Inc.*

Mowing ~ Weedeating ~ Edging ~ Mulching  
Leaf Control ~ Lawn & Shrub Fertilization Programs  
Planting ~ Sodding & Seeding ~ Architectural Stone  
Sprinkler System Installations & Maintenance

mic@ocala.com

Gary Sonneberger  
352.362.9278

## MEADOW WOOD FARMS CRITTER SITTER

SANDY MOLLBERG

861-9622

LENELEW@AOL.COM



## PEGASUS REALTY & ASSOCIATES INC

SOLD  
58 Never Bend Dr.

JUST LISTED  
1 Hialeah Dr.  
3/2/2  
POOL BARN  
IMMACULATE  
TURN KEY

Dorothy Henry  
Realtor

(352) 817-7494  
Fax (352) 629-0296  
Email: DOROTHYH2008@yahoo.com  
HORSEPROPERTIESOFOCALA.COM

5685 West Highway 40  
Ocala, Florida 34482



® St Johns United Methodist Church of Cotton Plant  
12390 West Hwy 328  
Ocala, FL 34482

Reverend William D. Kennedy, Pastor

We are an open church. All are welcome.

Sunday Worship & Children's Sunday School 10:30 am  
Adult Sunday School 9:30 am

United Methodist Youth Wednesdays 6 pm/ includes dinner

**www.stjohnscp.com**

(352) 237-5777



**Fidelity One Mortgage Group Inc**  
 2403 SE 17th Street STE 401 Ocala, FL 34471  
 Phone / Text (352) 239-1370 Fax (352) 694-2732  
 Email - ThomasSCorsoPA@hotmail.com

Home of the FREE  
 PreApproval!

**Thomas S Corso PA**  
 Mortgage Loan Originator  
 NMLS #1214521

Specializing in Customer Satisfaction!

If you think gas prices are low...  
**Our Wholesale Lender Rates**  
 will be an eye opener!

- \* Call today and see if we can...
- \* Lower your monthly payments and
- \* Shorten the years of your loan.

Call (352) 239-1370  
 Free - Confidential - No Obligation

Meadow Wood Farms Resident 27 years!

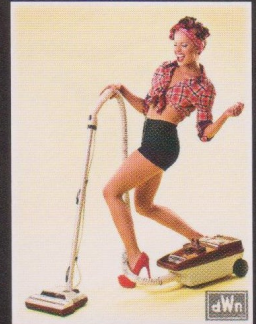
**Keeping it clean**

commercial & residential cleaning

Ocala, Gainesville, Villages & Surrounding  
 Areas  
 Free Estimates

1-352-843-7418

keepingitclean360@gmail.com



**YOUR BUSINESS AD**

**HERE!**

VISIT: [www.meadowwoodfarmsocala.com](http://www.meadowwoodfarmsocala.com)

Click *Newsletter*, Advertisements Rates for more  
 information or

email: [mwfpoanewsletter@gmail.com](mailto:mwfpoanewsletter@gmail.com)

Or Call Lisamarie 352-690-6099

**Classifieds**

**FOR RENT**

Meadow Wood Farms House 2/2  
 with horse pasture. Quiet + Private.  
 \$900/month Call #237-9964, leave  
 message

**DO YOU KNIT OR CROCHET?**

Would you like to join our group.  
 The Meadowlarks, we meet every Monday  
 from 1 to 3:30. Please call July at 873-2857  
 or Maryann at 237-1479 for more information

**HOW TO PLACE CLASSIFIED ADS**

Classified Ads (limited to 40 words if possible)  
**must be received by the 20th of each month.** This  
 space is dedicated to MWFPOA members.

Send your information for next month's newsletter  
 with subject "MWF Classified" to:

[mwfpoanewsletter@gmail.com](mailto:mwfpoanewsletter@gmail.com)



Do you know of a Meadow Wood Farms  
 neighbor in need? The Meadow Wood Farms  
 Angels are anonymous volunteers who are  
 ready to help.

To submit a request for assistance, email:  
[MWFAngels@gmail.com](mailto:MWFAngels@gmail.com) or call Elizabeth  
 Waller. The Angels will contact you and obtain  
 additional information.

## VOLUNTEER SPIRIT!

If you want to get more involved in your neighborhood and make more friends, we are always looking for volunteer spirited neighbors. Contact any board member to learn about our latest projects and initiatives.

### Meet Your Neighbor

#### Stephanie “Stevie” Gordon

#### Pets Are Good for the Soul

I'm Stephanie Gordon, usually known as “Stevie”. My location in Meadow Wood Farms may confuse some – I moved from southeast Pennsylvania in August of 2013 to 26 Wood Ridge Drive – a home purchased, but not yet occupied, by close friends. By the time the Lemisch family had relocated here, I was settling into the “little house in the woods” at 26 Carry Back Road. My three rescued cats allow me to remain as long as I fulfill my role of personal assistant to their satisfaction.



You will find me listed in the newsletter as an alternative to Sandy Mollberg for assistance with lost or found animals.

My history with rescue began many years ago and initially involved dogs and cats adopted from local shelters.

However, it was while I was employed as a Director of Nursing at a CCRC skilled nursing facility that I began to learn about and be involved in the plight of feral cats. The



winter of 1994 in Pennsylvania was marked by ice storms and below average temperatures with many power outages. From this frozen environment, a couple living independently in the CCRC rescued an emaciated and bedraggled feral cat. Barely beyond kittenhood herself, she promptly produced 3 tabby kittens in their bathtub on Valentine's Day. A little overwhelmed by their suddenly burgeoning pet population, the frail and elderly couple was relieved to place all four in “foster care” at the skilled nursing facility.

By Easter, the ice was a memory, the kittens were busily destroying tulips – and endearing themselves to staff and residents. Having been thoroughly socialized, they all earned wonderful adoptive homes. On the other hand, “Mom” was still suffering from her feral beginnings. As her health returned, she embraced the “domesticated” life and never willingly left the medical facility. She did not feel obligated to perform as a “therapy cat” (does any feline?), but many enjoyed seeking her out in my office area – she was a familiar fixture, a gentle soul, and a quieting influence – as well as a companion who shed on my clothing, slept on my desk chair, threw up on my carpet, and inspected job applicants from her superior vantage point on top of my desk.

Although she died at the relatively young age of 10 of renal failure, her legacy continued. The halls of the facility were never devoid of a visiting or resident pet of some sort thereafter, some successful and some not so much. Sam, the big male cat who arrived during Mom's reign, made regular rounds with the 11-7 shift and often singled out the bed of a declining resident as a good place to nap. We had a therapy dog for a short time, but his “work ethic” was lacking. A visiting goat was banished after she tried to snack on a resident's bible. And then there was the horse in the dining room episode – he was more courteous and well behaved than most visitors.



Animals/pets had been part of normal life for most of the residents in our care ~ why remove this presence when they are ill, infirm, and vulnerable? **Whatever we gave to the “rescues” in terms of a warm, safe, and comfortable life, they returned many times over in making a nursing facility a little more like “home”.**



# Membership Form & Information to Access Our Website, etc.

Please send or email items to be published to:  
Lisamarie Magras-Lucia  
3 Lakewood Circle  
Ocala, FL 34482  
Ph: 352 -690-6099  
email: mwfpoanewsletter@gmail.com

Send payment for ads to  
Dick Woodrome  
MWFPOA, P.O. Box 771896, Ocala, FL 34477

Annual membership dues for the MWFPOA are June through May. If you aren't a member, we would love for you to join us. The MWFPOA provides all kinds of services for your neighborhood (including this newsletter). Please use the form below to accompany your check. **Need to check if you've paid?** Contact Dick Woodrome at 861-2364 or email him at [rdw218w@aol.com](mailto:rdw218w@aol.com).

To Join The Meadow Wood Farms Email Blasts and Conversation, go to [Meadowwoodfarms1@aol.com](mailto:Meadowwoodfarms1@aol.com) and ask the site master to add your email address. Please respect the rules...no politics, or religion or any attachments or offensive material. This site is offered by a private member of the association. It is an extremely useful tool and we are grateful to that person.

MEADOW WOOD FARMS WEBSITES:

[www.meadowwoodfarmsocala.com](http://www.meadowwoodfarmsocala.com)

From main page, click on **Neighbor to Neighbor**- Neighbor to Neighbor Directory

From main page, click on **Newsletter** - and then the month.—Newsletters

## Please Join

### MEADOW WOOD FARMS PROPERTY OWNERS ASSOCIATION, INC.

Please send your check for \$55.00 (Annual Dues Effective June 01, 2014) with this form to :

Meadow Wood Farms Property Assoc., Inc., P.O. Box **771896**, Ocala FL **34477**

Also, please print & fill out the below information:

Name (s): \_\_\_\_\_

Address: \_\_\_\_\_

Email: \_\_\_\_\_

Phone: \_\_\_\_\_

YES  NO Put my/our information in the directory.

YES  NO I want my/our Newsletter mailed to my/our address. Otherwise it is always posted on the website, which saves the Association printing and mailing costs.



www.meadowwoodfarmsocala.com

Photos always look  
better in our online  
edition.

OCALA, FL 34477-1896

P. O. BOX 77-1896

PROPERTY OWNERS ASSOC.

MEADOW WOOD FARMS



Dave & Deb Kane's "Tiffy"