

FEBRUARY 2017

MEADOW WOOD FARMS NEWSLETTER

www.MWFPOA.com



**A MONTHLY PUBLICATION OF
M.W.F.P.O.A. , P.O. BOX 77-1896—OCALA, FL 34477**

Meeting Dates

**Next Board Meeting
March 9, 2017**

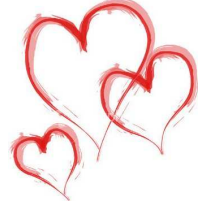
Thursday —7:00 PM

**Next Assoc. Meeting
March 16, 2017**

Thursday— 7:00 PM

Agenda: TBA

**Welcome Baskets will
be available at future
meetings for new
residents.**



New Neighbors



**Steven Head & Ivanova Nadezda
49 Lake Wood Circle**



**Michael Ross & Shelly Simpson
11 Wintergreen Way**

Inside this issue:

**Tim Masterson-Smith & Maria Meunier
34 Needles Drive**

**Heidi Boynton
22 Lake View Drive West**

President's Message	2
Association Info	3,4,5,6
MWEC News	7
MWF CLUBS & ACTIVITES	8
Advertisements & Classifieds	9, 10
Form for Membership Join Now	11

**Eula Scott & Bobette Ware
1 Saddle Drive**

**Robert Louis Roberts
49 Never Bend Drive**

**American FMR Corp.
18 Lake View Drive West
17 Lake Wood Circle**



**Denver & Helen Smith
24 Hill Prince Drive**

**Lisette & Timothy Goodman
69 Lake View Drive East**

**Magdalena (Max) Leeuwenburg
3 Wintergreen Way**



**NEW BLOOD IN THE 'HOOD**

Definition of "new blood" according to The Free Dictionary: Additional, fresh individuals regarded as an invigorating force, as in an organization.

I always enjoy our bimonthly Association Meetings. The topics are (we hope) relevant, the fellowship is warm, the humor is entertaining (even when it's at my own expense 😊), and of course, the refreshments are outstanding. I look forward to the opportunity to connect with neighbors I have not seen recently, often since the last Association meeting two months prior. But our meeting last Thursday, January 19th, was unusually memorable. We had at least a half dozen NEW residents in attendance for the first time. We actually ran out of Welcome Baskets! It was so encouraging to see these new faces, and to sense their enthusiasm for their new community. At the end of the meeting, so many impromptu conversations had broken out among new and old attendees that I had to actually "invite" about a dozen people to leave so I could lock the church doors!

I was reminded of my first Association meeting, way back in July of 2008. I had been in residence for less than two weeks, and came to the meeting just to observe and figure out how things worked here in Meadow Wood Farms. Jim Bain, our President at the time, introduced me as a new resident to the assembled members, and by the end of the meeting I had joined an exercise group, made a date to go trail riding, and learned more names than I could possibly remember. It was an amazing experience, and one of the primary influences on my decision not only to join the Association, but also eventually to serve on the Executive Board.

"New blood" is essential to any organization. As the definition implies, there can be a tendency toward stagnation and stasis in any group; a "transfusion" of vigor is often needed to restore forward movement and promote positive growth. We have so many areas in which new ideas could transform our association and make it more responsive to everyone's needs. If you are a new resident reading this, please consider this my personal invitation to call or email me to discuss where your skills and interests might fit into Meadow Wood Farms. I assure you that participation in the community will only increase your appreciation for this very special place and the very special people who live here.

Elizabeth Waller, President
352-304-8871
Elizabeth@slowturningfarm.com

Meadow Wood Farms – 30 MPH All Roads / Have a Nice Day

As a member of the board of directors for the MWFPOA I would have to say that speeding is perhaps the most common complaint within our community. We have received suggestions from owners about speed bumps, more stop signs, and having additional speed limit signs throughout the community.

I am relatively a newcomer to the board but other members say this has been a problem for as long as they can remember and has been addressed numerous times. Stop signs are not intended, nor function effectively for speed control. Speed bumps are unsightly, cause discomfort for people with certain medical conditions, and have a long list of undesirable effects. We've been informed that the existing signage is adequate. Besides, having speed signs on every block would detract from the beauty of our community. We have received additional law enforcement efforts and I'm told there were a number of drivers who were ticketed for both speeding, seatbelt, and stop sign violations. The stepped up enforcement hasn't resolved the speeding problem.

I personally make it a habit of adhering to the speed limit (within this development). And that part of the sentence "within the development" is what got me thinking about what we can do to help with this problem. It got me thinking "why am I willing to somewhat push my luck elsewhere but strictly follow the speed limit within our community"? I realized that it isn't respect for the law, nor the threat of receiving an expensive ticket which influences my driving habits. It is out of respect for my neighbors and our beautiful community that I ease the pressure off that accelerator when I enter Meadow Wood Farms.

With this in mind I petitioned our board for the purchase of the new signs now hanging at our entrances. As you leave they wish you to "Have a nice Day". It is my hope that as you return they serve as a reminder that we, as a community, all benefit when we are considerate of the safety and well-being of our neighbors.

Special thanks to Wayne Hebert for help in the design and acquisition of these signs.

Robert Coveney MWFPOA - Vice President



Officers of MWFPOA & Committees

President	Elizabeth Waller	352-304-8871	Directory	Chair: Elizabeth Waller	304-8871
	Elizabeth@slowturningfarm.com		Membership	Chair: Linda Lemisch	237-7401
Vice-President	Bob Coveney	352-229-4243	Newsletter Staff	Chair: Dorothy Henry	817-7494
	rwcovoney@yahoo.com			Jodie Gebhard	
Secretary	Leslie Pope-Hall	861-3292		Sandy Mollberg	
	blctie@aol.com			Karen Reade / Delivery	622-2030
Treasurer	Dick Woodrome	861-2364	Parties	email: mwfpoanewsletter@gmail.com	
	rdw218w@aol.com			Chair: Connie Story	369-0809
MINUTES ARE POSTED ON THE WEBSITE AFTER THE BOARD MEETINGS AND THE GENERAL MEMBERSHIP MEETINGS			Recycling	Chair: Rachael & Lillian Workman	
			Refreshments	Chair: BK Sawyer,	861-8883
				Janice Eide	
Pet Rescue	Chair: Stephanie Gordon	484-802-3786	Sunshine	Chair: Karen Reade	622-2030
Beautification	Chair: Vacant		Welcome	Chair: Della Brock	873-2726
Control	Chair: Vacant				



SAFETY REMINDER

Once our grass starts growing again (and you know it will eventually), please remember to blow your cuttings back onto your property. Piles of cut grass on the pavement create a significant safety hazard for both our motorcycle and bicycle-riding neighbors. Let's be considerate and protect each other!

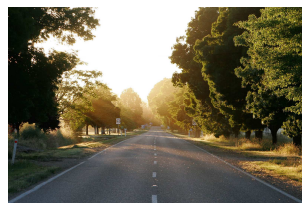


ALERT -- ROAD RESURFACING WARRANTY EXPIRES JUNE 2017

All residents should take note that the contractor's one-year warranty on the MWF Roads Resurfacing project will expire in early June 2017.

This means that we should all take a few moments to inspect the roads along our own frontage for defects, as well as noting any others within the neighborhood. Defects that you believe are related to the work performed in 2015-2016 should be reported in detail (including street address and exact location of defect) to:

PETER HODGES, Project Manager // Peter.hodges@marioncountyfl.org // 352-438-2650



MEETING UPDATES

Two items from the last Association Meeting held on January 19th with implications for all MWFPOA members:

Work will begin shortly on upgrading the electrical wiring in Friendship Park to bring it up to code and to provide more even and reliable electrical service to the pavilion for the various Association events and activities held there. After obtaining several estimates, the Board recommended that we hire Handy-Men Electric, LLC to do the work for \$3,000. After some discussion, the members in attendance approved the expenditure unanimously.

Secondly, after receiving two qualified responses to the Request for Proposal issued in December for the mowing/maintenance of MWF common areas, the Board recommended and the members approved pursuing a contract with 3T's Lawn Care of Dunnellon. The actual mowing schedule will be negotiated with the Board, but will include 14 cuts per year of the two entrances and the Park. The total contract price is \$2,240, or \$186.66 per month.

Questions may be directed to Elizabeth Waller or Dick Woodrome.





Membership & Newsletter

The newsletter is ALSO available in color on the website.

www.meadowwoodfarmsocala.com or
www.MWFPOA.com

The current **membership** year runs from June to the end of May the next year. Please renew your membership ASAP. Your membership supports the monthly Newsletter along with a multitude of events and improvements to our community. We need all of you to participate in keeping Meadow Wood Farms the wonderful place to live that we enjoy. Finally, don't forget that as a member you have a voice and a vote and are encouraged to participate in all aspects of the Association.

Need to check if you've paid? Contact Dick Woodrome at 861 -2364 or email him at rdw218w@aol.com. You can have the good feeling that comes from being an involved and contributing member of your community.

The NEWSLETTER will be delivered to everyone in MWF who requested it. Mailing tubes have been attached to your mailbox stand in order to make these deliveries legal in the eyes of the USPS. If you're not getting one and/or need a tube, contact **Dick Woodrome at 861-2364 or email him at rdw218w@aol.com**



A BIG Thank You to all our generous members who contribute delicious goodies to our meetings making them more festive and social.



Thank You Newsletter Delivery People

A volunteer group of your neighbors delivers your newsletter every month . This saves the association considerable mailing expense and ensures that you get your newsletter in a timely manner.

Recycle Your Aluminum Cans

To Benefit MWFPOA Treasury

Two of our neighborhood young ladies have volunteered to take over the collection.

Thank you Rachael and Lillian Workman!

The recycle point for your aluminum cans is at the front entrance to the Friendship Park on Lake View Drive East. Barrels are provided for that purpose. Cans that are rinsed, tab tops removed and crushed are our favorites. Tab tops may go to any charity you know or bring them to meetings to go to Shands Juvenile Kidney foundation.

ALUMINUM CANS ONLY PLEASE!



Hi Everyone,

Just a small reminder, if you are leaving town for a bit, please let the delivery people know so they don't stuff your newsletters into the tube. Also, when you take a walk to your mailbox, just check to make sure your tube is empty...we are finding a lot of news letter still in the tubes. You can Print it off the Web Site or we can Deliver it or even Mail it to you...

Thank you, Newsletter Staff



Come to the Meeting and Win \$150.00



COMMUNITY MATTERS

Stay Safe...Stay Connected... The MWF Phone a Friend Program.

Connects you with a partner for your well being. YOU are in Control, you pick your partner and method of contact , email, text or phone.

Remember, One Fall, One Mishap is all it takes to change your Life Forever.

For an Application Form Call: Elaine Hager 873-1951



Sunshine Report

If you are aware of someone who could benefit from receiving a card, whether due to illness or other reason, please notify: Karen Reade Email: AT20146@Earthlink.net

Deepest Sympathy:

Karen Sawyer & Family

Get Well Soon:

Beth Risen

Lynn Zachary

Claire Stanley

NEW BABY:

Amy & Jason Sexton

MWEC - Meadow Wood Equine Club Inc. (not affiliated with MWFPOA) is a social group of horse oriented people. Join us for discussions, find someone to ride with, camaraderie, potlucks, store discounts, etc. Guests are always welcome.

Membership is open to anyone – you do not have to live in Meadow Wood Farms or even own a horse to join. Membership is \$5.00 a year 1/1 to 12/31. Members receive a 10% discount off “most in store items” at Seminole, Tack Shack and J & J Tack. - some restrictions apply – some items are not discounted, such as feed, hay, shavings, and warehouse items. Ask each store for their details. You must show your membership card to receive the discount. Please call Kathy at 352-895-9977 to become a member.

For more information, please call: Secretary-Treasurer Kathy Rohlwing at 895-9977, or Vice-President Carol Shockey at 873-4719, or President Leroy Conroy at 873-2153.

UPCOMING EVENTS



The HITS Ocala Winter Circuit continues

The HITS Ocala Winter Circuit offers 10 consecutive weeks of shows with two additional weeks of USEF-Rated shows. The extensive range of classes, offers over \$4 million in prize money, and abundant show opportunities. It features USEF National and Premier-Rated Hunters, 5* and 6* Jumpers, two \$50,000 USHJA International Hunter Derbies and qualifiers for the HITS Championship. In February, HITS Post Time Farm will also play host the 2017 Nations Cup for the third consecutive year. The HITS Ocala Winter Circuit culminates each March with the Great American \$1 Million Grand Prix. No admission charge Wednesday through Saturday. On Sunday, General Admission tickets are \$5 Children 12 and under are free. General Admission for the FEI Nations Cup on Friday, February 17 and the Great American Million on Sunday, March 26, is \$10; Children 12 and under are free. General Admission tickets available at the gate at Hits Post Time Farm, 13710 US Highway 27. 352.620.2275

For more information - <http://www.hitsshow.com/ocala-fl/ocala-fl-2> & <http://www.hitsshow.com/ocala/hits-ocala-winter-circuit>

- January 31 - February 5, 2017 - Tuesday thru Sunday - HITS Ocala Premiere III - week 3 - USEF National / 5***
- February 3 & 4, 2017 - Friday & Saturday - Ocala Tractor Pull - at the Southeastern Livestock Pavilion, 2232 NE Jacksonville Road, 671-8600**
- February 5, 2017 - Sunday - HITS \$50,000 Grand Prix - approximately 2 pm**
- February 7- 12, 2017 - Tuesday thru Sunday - HITS Ocala Winter Classic IV - 8 am to 4 pm - week 4 - USEF National / 5***
- February 10 - 12, 2017 - Friday thru Sunday - Orange Blossom Miniature Horse Show - at the Southeastern Livestock Pavilion - 2232 NE Jacksonville Road**
- February 10 - 12, 2017 - Friday thru Sunday - Grand Oaks Classic Pleasure Driving Completion - Free admission, spectators welcome. Friday, February 10: Dressage and Cones at 8:00 am. Super Derby at 1:00 pm at the Covered Arena. Award Ceremony in The Bistro at 6:00 pm. Saturday, February 11 & Sunday, February 12: Pleasure Driving Competition at 8:00 am.- at Grand Oaks Resort & Carriage Museum, 3000 Marion County Rd, Weirsdale. For more information, map & directions - <http://thegrandoaks.com/> (352)750-5500**
- February 10 - 12, 2017 - Friday thru Sunday - Equiventures Ocala Winter Horse Trials - 8:00 am - 5:00 pm - at the Florida Horse Park, 141008 S. Hwy 475 (352) 307-6699**

February 11, 2017 - Saturday - HITS Ocala Winter Circuit - USHJA Pony Hunter Derby & - HITS USHJA International Hunter Derby

February 11, 2017 - Saturday - Tractor Supply Farm Swap - Saturday 9:00 am - 2:00 pm - (RAIN OR SHINE) - Buy-Sell-Trade Anything and Everything Poultry, Livestock or Farm related (NO yard sale items). Bring your own setup - tables, cages, corrals, etc. Dunnellon Tractor Supply, 11242 N Williams St aka US41 directly behind McDonalds.



February 12, 2017 - Sunday - HITS \$50,000 Grand Prix

February 14, 2017 - Tuesday - Gala of the Royal Horses of Europe - will feature a number of performances involving the Andalusian, Friesian, Lipizzaner and Arabian breeds. This performance will celebrate the tradition, athleticism and grace and is dedicated to showing off the beauty and maneuvers these horses are capable of, including the maneuvers once used on the battlefield known as "The Airs Above The Ground".

ADVANCE TICKETS ONLY: General Admission Tickets are \$35 each. VIP Admission Tickets are \$59 and includes a Champagne Welcome, Ring-side Table Seating, Hors d'oeuvres, and Meet & Greet after the Show.

Held at Grand Oaks Resort & Carriage Museum, 3000 Marion County Rd, Weirsdale. at the Covered Arena. Gates open at 2:00 pm and the Show starts at 3:00 pm. - For more information, map & directions - <http://thegrandoaks.com/> (352) 750-5500

February 14 - 19, 2017 - Tuesday thru Sunday - HITS Ocala Winter Festival - week 5 - USEF Premier / 6*

February 16, 2017 - Thursday - HITS \$25,000 SmartPak Grand Prix

General Admission for the FEI Nations Cup on Friday, February 17 is \$10; Children 12 and under are free.

February 18, 2017 - Saturday - Gypsy Vanner Horse Society - Spectators are welcome to come and view the horses 8:30 am Performance Evaluation Seminar followed by GVHS Evaluations

9:30 am Suitability for Dressage; Tips for Dressage Beginners (Participate with your GVHS horse)

CONCURRENT with

9:30 am Introduction to CDE competitions (Demonstration followed by clinic with your GVHS horse)

1:45 pm Ranch Riding Obstacles & Mini-Competition (Participate with your GVHS horse)

- at Grand Oaks Resort & Carriage Museum, 3000 Marion County Rd, Weirsdale. For more information, map & directions - <http://thegrandoaks.com/> (352)750-5500

February 19, 2017 - Sunday - The Ag Mag Wine Festival at Hits - 12 - 8 pm - Wine, Food, Arts/Crafts, Live Music, Demonstrations.

February 19, 2017 - Sunday - HITS \$100,000 City of Ocala Grand Prix - approximately 2 pm
& - HITS Nations Cup CS104

February 21 - 26, 2017 - Tuesday thru Sunday - HITS Ocala Masters - week 6 - USEF Premier / 5*

February 26, 2017 - Sunday - HITS \$50,000 Grand Prix - approximately 2 pm
& - HITS FEI CS12

February 28 - March 5, 2017 - Tuesday thru Sunday - HITS Ocala Tournament - week 7- USEF Premier / 5*

March 3 - 5, 2017 - Friday thru Sunday - Southern Regional Paso Fino Ocala Schooling Classic Show - at the Southeastern Livestock Pavilion - 2232 NE Jacksonville Road

March 4 & 5, 2017 - Saturday & Sunday - Hunt Country Horse Show - start at 4:00 P.M. Friday and 9:00 A.M. Saturday
No admission price, spectators welcome! Children's event at the Front Arena (museum side). Advanced participants at the
- at Grand Oaks Resort & Carriage Museum, 3000 Marion County Rd, Weirsdale. For more information, map & directions - <http://thegrandoaks.com/> (352)750-5500

March 5, 2017 - Sunday - HITS \$50,000 Grand Prix - approximately 2 pm

Line Dancing– Sandy Mollberg

Guys & Gals !!!! Come One, Come All

NEW BEGINNERS LINE DANCING at our MWF Friendship Park

Starting at 7p.m. Monday & Wednesday

Line Dancing to your favorite songs, Including Country, songs from the 50's & 60's and today's top Hits.

New Dances introduced periodically, we are presently dancing to songs like "Majestic, Electric Slide, Boot Scootin Boogie, Neon Moon, 1814, 16 Tons, Soul Song etc...

If you are interested, Please Contact Sandy Mollberg at

352-861-9622 or email me at lenelew@aol.com

FREE
LINE DANCE
LESSONS





St Johns United Methodist Church of Cotton Plant

12390 West Hwy 328, Ocala, FL 34482

Reverend William D. Kennedy, Pastor

We are an open church. All are welcome.



Sunday Worship & Children's Sunday School 10:30 am

Adult Sunday School 9:15 am

United Methodist Youth Wednesdays 6 pm includes dinner

**Men's Club PANCAKE BREAKFAST.....!
Come Hungry, Bring Family & Friends..!
Sat Feb 4 7:30 am-9:30 am**

(EVERY 1st Sat thru APRIL...!)

Pancakes, eggs, bacon, sausage, grits, biscuits'n gravy & OJ...

Adults \$6 / Kids \$3

www.stjohnscp.com Call (352) 237-5777



Dorothy Henry

352 817-7494

Pegasus Realty & Assoc. Inc.
5685 W Hwy 40, Ocala, FL 34482



Ocala, M.E., Inc.
***4 Bedroom * 3Bath * 3150 SF
*2 plus acres *\$289,000
Located in desirable MWF**



***2 Bedroom *2 Bathroom *Log Home
*1.63 Acres *Quiet *Serene setting
Located in Desirable MWF *\$214,000**



***4 Bedroom *3 Bathroom *3300 SF
*4 Plus Acres *\$298,000
Located in Meadowbrook Ranches**

Desirable Meadow Wood Farms— Let me help you find your dream home in this friendly horsey community where everybody knows your name!





Meadow Wood Lawn Care

Mowing - Edging - Blowing
 Weeding - Lawn & Shrub
 Fertilization - Planting
 Seeding & Soaking
 Sprinkler System
 Irrigation & Maintenance
 Pressure Washing
 Monthly & Per Cut
 Maintenance Programs
 Free Estimates



Gary Sonneberger
 352-362-9279
 gonne@live.com

MEADOW WOOD FARMS
CRITTER SITTER

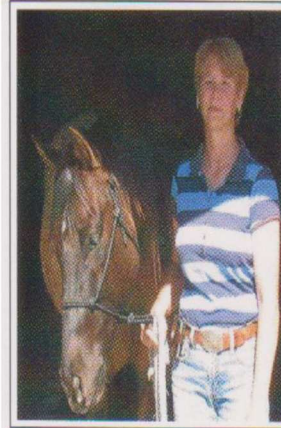
SANDY MOLLBERG
 861-9622
LENELEW@AOL.COM



Do you know of a Meadow Wood Farms neighbor in need? The Meadow Wood Farms Angels are anonymous volunteers who are ready to help.

To submit a request for assistance, email: MWFAngels@gmail.com or call Elizabeth Waller. The Angels will contact you and obtain additional information.

PEGASUS REALTY & ASSOCIATES INC



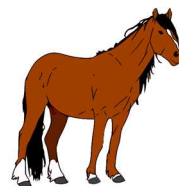
Dorothy Henry
 Realtor

(352) 817-7494

Fax (352) 629-0296

Email: DOROTHYH2008@yahoo.com
HORSEPROPERTIESOFOCALA.COM

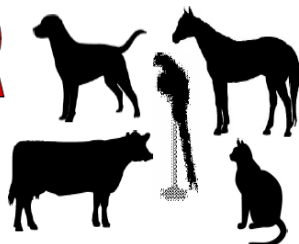
5685 West Highway 40
 Ocala, Florida 34482



PET SITTER

Pamela Hebert

Fully Insured/Bonded
 Dogs, Cats, Horses, Birds,
 Exotics. Feed, clean, get
 mail, water plants, etc.



1-410-708-6475

pam@esignsonline.com

OCALA, FL

Years of horse & vet tech experience.

M.W.Farms Resident

I come to your house.
 Less stress for your pets!

VOLUNTEER SPIRIT!

If you want to get more involved in your neighborhood and make more friends, we are always looking for volunteer spirited neighbors. Contact any board member to learn about our latest projects and initiatives.



Membership Form & Information to Access Our Website, etc.

Please send or email items to be published to:

Dorothy Henry
14 Never Bend Drive
Ocala, FL 34482
352-873-8903

email: mwfpoanewsletter@gmail.com

Send payment for ads to

Dick Woodrome
MWFPOA, P.O. Box 771896, Ocala, FL
34477

Annual membership dues for the MWFPOA are June through May. If you aren't a member, we would love for you to join us. The MWFPOA provides all kinds of services for your neighborhood (including this newsletter). Please use the form below to accompany your check. **Need to check if you've paid?** Contact Dick Woodrome at 861-2364 or email him at rdw218w@aol.com.

To Join The Meadow Wood Farms Email Blasts and Conversation, go to Meadowwoodfarms1@aol.com and ask the site master to add your email address. Please respect the rules...no politics, or religion or any attachments or offensive material. This site is offered by a private member of the association. It is an extremely useful tool and we are grateful to that person.

MEADOW WOOD FARMS WEBSITES:

www.meadowwoodfarmsocala.com or www.MWFPOA.com

From main page, click on **Neighbor to Neighbor**- Neighbor to Neighbor Directory

From main page, click on **Newsletter** - and then the month.—Newsletters

Please Join

MEADOW WOOD FARMS PROPERTY OWNERS ASSOCIATION, INC.

Please send your check for \$55.00 (Annual Dues Effective May 31, 2017) with this form to :

Meadow Wood Farms Property Assoc., Inc., P.O. Box [771896](http://www.meadowwoodfarmsocala.com), Ocala FL [34477](http://www.meadowwoodfarmsocala.com)

Also, please print & fill out the below information:

Name (s): _____

Address: _____

Email: _____

Phone: _____

YES NO Put my/our information in the directory.

YES NO I want my/our Newsletter mailed to my/our address. Otherwise it is always posted on the website, which saves the Association printing and mailing costs.

A directory is distributed to MWFPOA member at no charge. It may be purchased by non-members for \$5.00. Copies available to members for \$2.00 each.



MEADOW WOOD FARMS
PROPERTY OWNERS ASSOC.

P.O. BOX 77-1896
OCALA, FL 34477-1896

*Photos always look
better in our online
edition.*

www.MWFPOA.com